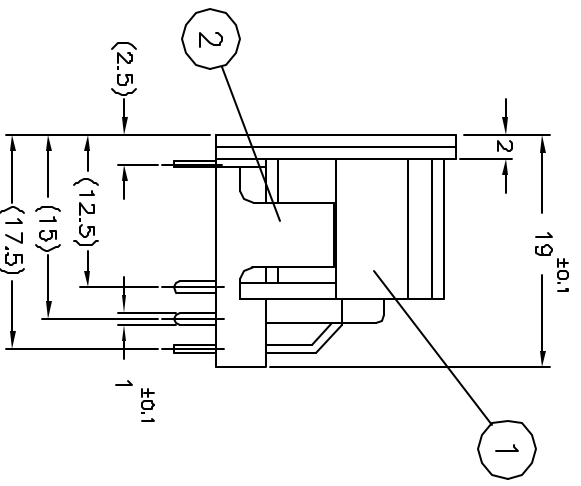
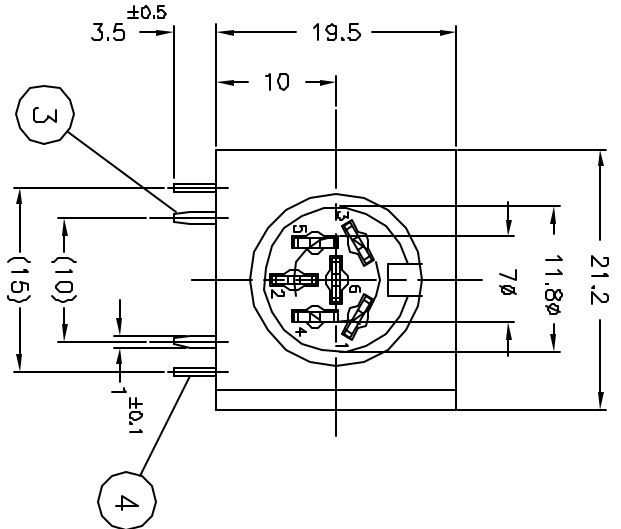


HOLE LAYOUT (TOP VIEW)



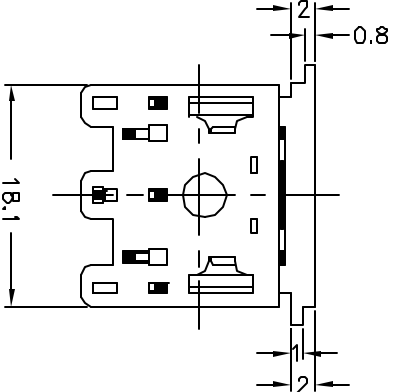
SPECIFICATIONS:

1. CURRENT CARRYING CAPACITY:
 - 1) AC: 100V 1A MAX.
 - 2) DC: 24V 2A MAX.
2. CONTACT RESISTANCE:
 - 1) INITIAL, BEFORE LIFE CYCLE TEST, CONTACTOR TO PLUG PIN: 20mΩ MAX. EARTH TERMINAL TO PLUG SHELL: 100mΩ MAX.
 - 2) AFTER LIFE CYCLE TEST, CONTACTOR TO PLUG PIN: 100mΩ MAX. EARTH TERMINAL TO PLUG SHELL: 150mΩ MAX.
3. INSULATION RESISTANCE:

BETWEEN ANY ADJACENT OPEN CONTACTS SHALL NOT BE LESS THAN 100MΩ AS SPECIFIED BELOW WITH AT 500V DC INSULATION RESISTANCE TEST.
4. DIELECTRIC STRENGTH:

A POTENTIAL OF 500V AC RMS, 50/60HZ SHALL BE APPLIED BETWEEN ANY OPEN CONTACTS FOR ONE MINUTE WITHOUT BREAKDOWN.
5. INSERTION FORCE: 5.0kg MAX.
6. WITHDRAWAL FORCE: 1.0kg MIN.
7. LIFE CYCLE TEST:

CONNECTOR SHALL BE SUBJECT TO 5,000 CYCLES AT 10 TO 20 CYCLES PER MINUTE WITH NO ELECTRICAL LOAD.
8. UNLESS OTHERWISE SPECIFIED TOLERANCE ARE: ±0.2mm



4	CONTACT TERMINAL	6	BRASS 0.7t TIN ALLOY PLATING
3	EARTH TERMINAL	1	PHOSPHOR BRONZE 0.25t TIN ALLOY PLATING
2	COVER	1	PBT UL 94V-0 BLACK COLOR
1	BODY	1	PBT UL 94V-0 BLACK COLOR
LTR	PART NAME	QTY	MATERIAL & SPEC
 Singatron Enterprise Co., Ltd. 信普企業股份有限公司			
TITLE 6P 240° DIN CONNECTOR			
DWN	CHEN 3/4-'99	UNIT: MM	CAD NO. DJD196FA
CHKD	SHUN 3/4-'99	SCALE: 2/1	
APPVD	FRANK 3/5-'99	SIZE: B4	
DWG NO. NEW NO. 2DJ-0196PA02		OLD NO. DJ-019-6P(A)	